

Paris

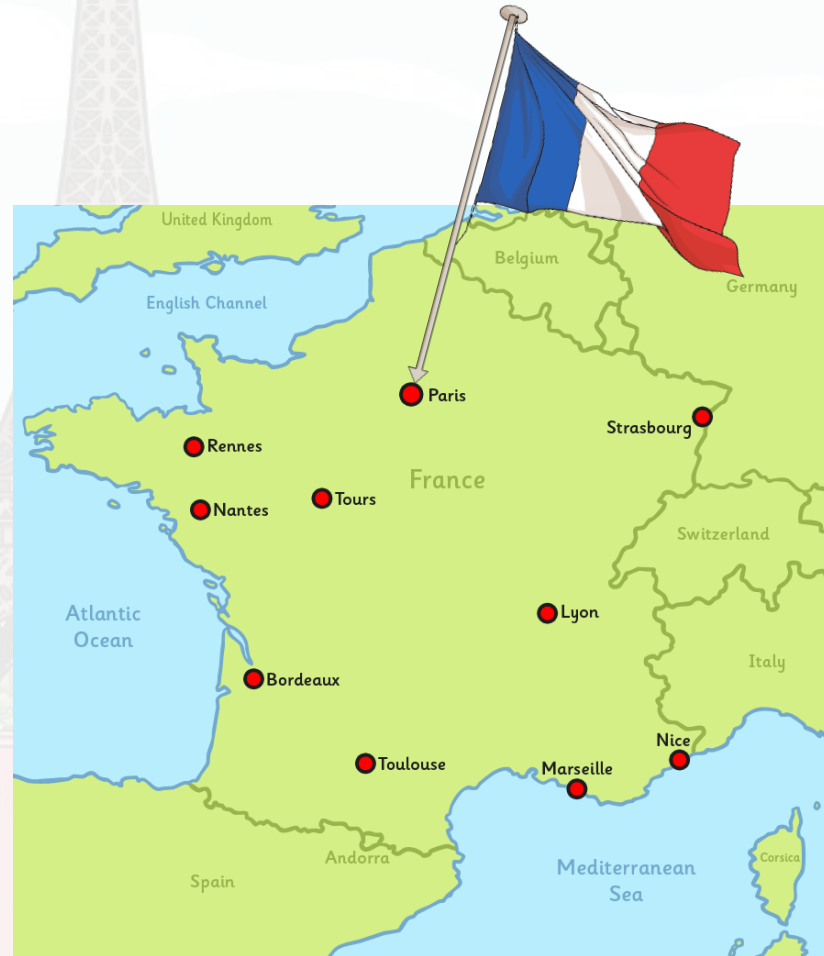


What is it like?

Paris is the capital city of France, with the largest population in the country.

People who live there are called Parisians.

Paris is one of the world's leading cities in the fashion, music, politics and the arts.



Culture

Name of Country:

France

Population:

2.234 million

Official Language:

French

Famous Landmarks:

Eiffel Tower

Arc de Triomphe

Louvre Museum

Notre Dame
Cathedral



Louvre Museum



Eiffel Tower



Notre Dame Cathedral



Arc de Triomphe

The Eiffel Tower

The Eiffel tower was designed by Gustave Eiffel and his engineering company.

It was built in 1889 for the Paris World's Fair.

The Eiffel tower was originally designed as a temporary structure but has stood for over 100 years.

It is one of the most visited sites in Paris.



Photo courtesy of (@flickr.com) - granted under creative commons licence – attribution

The Louvre

The Louvre is the world's biggest museum in the world.

It is home to 35,000 priceless artefacts and paintings including Leonardo da Vinci's Mona Lisa.

The building was originally built as a fortress in 1190. It was then turned into a palace in the 16th Century before being opened to the public as a museum in 1793.

The glass pyramid was built in 1989 and is 21 metres tall.



Photo courtesy of (@flickr.com) - granted under creative commons licence – attribution

Notre Dame

The Notre Dame is a cathedral located in the very heart of Paris and is one of the city's most popular tourist sites.

It was built between 1163 and 1345 and was designed in the Gothic fashion.

It is one of the largest religious buildings in the world standing at 130 metres long, 48 metres wide and 35 metres high.

Sadly, the church's spire was destroyed in a fire in April 2019.

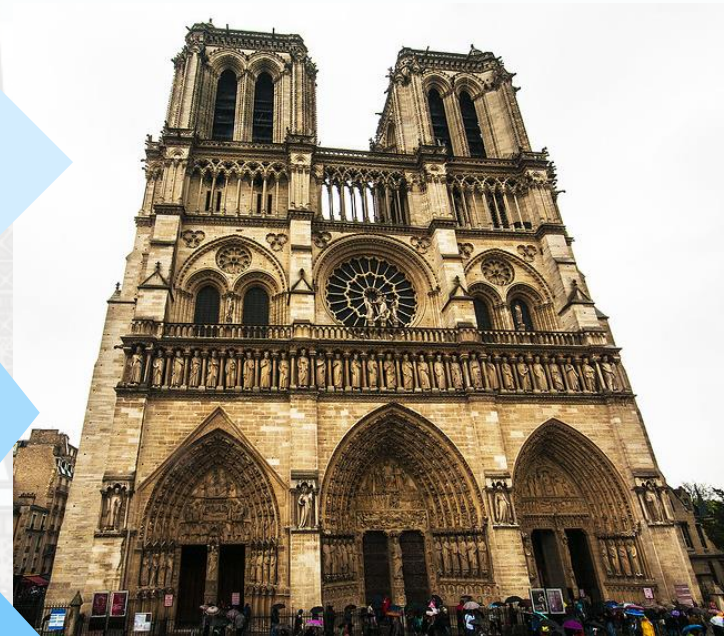


Photo courtesy of (@flickr.com) - granted under creative commons licence – attribution

The Arc de Triomphe

Napoleon ordered the construction of the Arc de Triomphe in 1806 and it was finally finished in 1836.

It stands at the centre of the Place Charles de Gaulle (a large road junction in Paris) and honours those who fought and died for France in past battles and wars.

The monument was designed by French architect, Jean Chalgrin.

It is 50 metres tall, 45 metres wide and 22 metres deep.



Photo courtesy of (@flickr.com) - granted under creative commons licence – attribution

Disneyland

Disneyland Paris opened on
12th April 1992.

It was originally called 'Euro Disney'
and was the second resort to open
outside of the US.

It has two theme parks (Disneyland
Park and Walt Disney Studios park),
seven Disney themed hotels, shops, a
nightclub and a cinema and is
Europe's leading tourist destination!

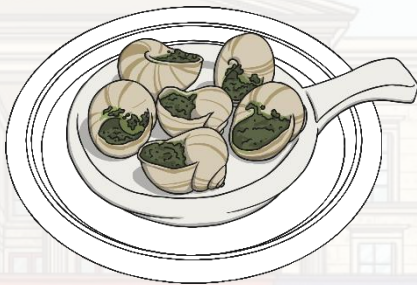


Photo courtesy of (@pixabay.com) - granted under creative commons licence – attribution

Food

Paris is famous for its elegant pastries, cheeses and wines.

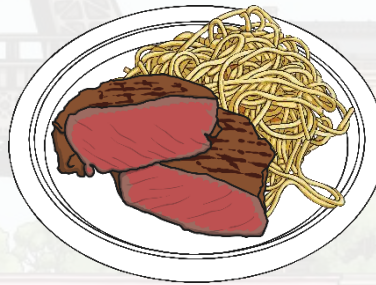
A typical Parisian meal can consist of:



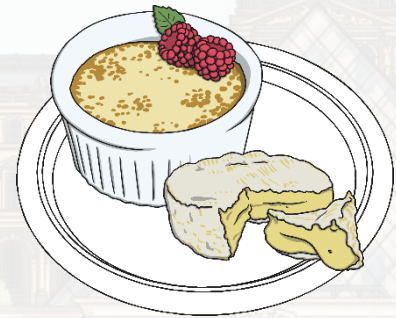
hors d'œuvre
starter



entrée
introductory
course, e.g. soup



plat principal
main course



fromage / dessert
cheese or dessert

Food



Patisserie

Photo courtesy of (@flickr.com) - granted under creative commons licence - attribution

Food



French cheeses

Photo courtesy www.tablehopper.net/@flickr.com - granted under creative commons licence - attribution

School

The French education system is divided into three stages:

- primary
- secondary
- higher education (university)

School is compulsory from the age of 6.

Schools in Paris are not so different from those in other developed countries.



