

The Leaning Tower of Pisa

twinkl

The Leaning Tower of Pisa

You may be asking yourself...

What is the Leaning Tower of Pisa?

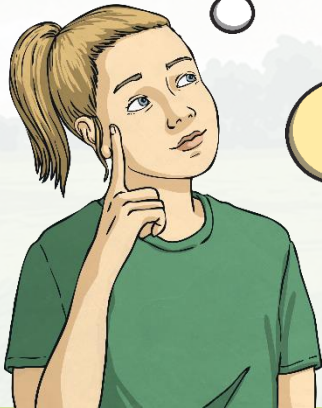
Where is it located?

What are its dimensions?

Why does it lean?

Is it popular with tourists?

When was it built?



This presentation will answer all these questions!

What Is the Leaning Tower of Pisa?

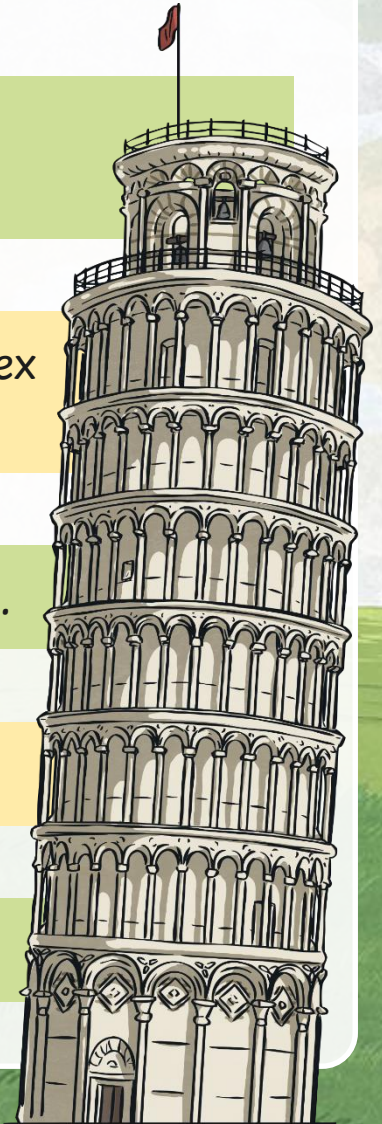
The Leaning Tower of Pisa is the freestanding bell tower for Pisa Cathedral.

It is one of four buildings that make up the cathedral complex or 'Piazza dei Miracoli', which means 'Square of Miracles'.

There are seven bells, in a bell chamber, on the seventh floor.

Its name is Torre di Pisa in Italian.

It is a fine example of the Romanesque architectural style.



Where Is the Leaning Tower of Pisa Located?

The Leaning Tower of Pisa is in the city of Pisa in the Tuscany region of central Italy.



What Are the Leaning Tower of Pisa's Dimensions?

Due to the angle it stands at, the Leaning Tower of Pisa is about 55.9 metres tall on the lower side and about 56.7 metres tall on the higher side.

There are a total of eight floors.

There are two main staircases in the tower with 294 steps on the north-facing staircase and 296 steps on the other.

The external diameter at the base is about 15.5 metres.

It was originally intended to be 100 'braccia' tall. A 'braccia' was an ancient measurement that was equivalent to an arm.



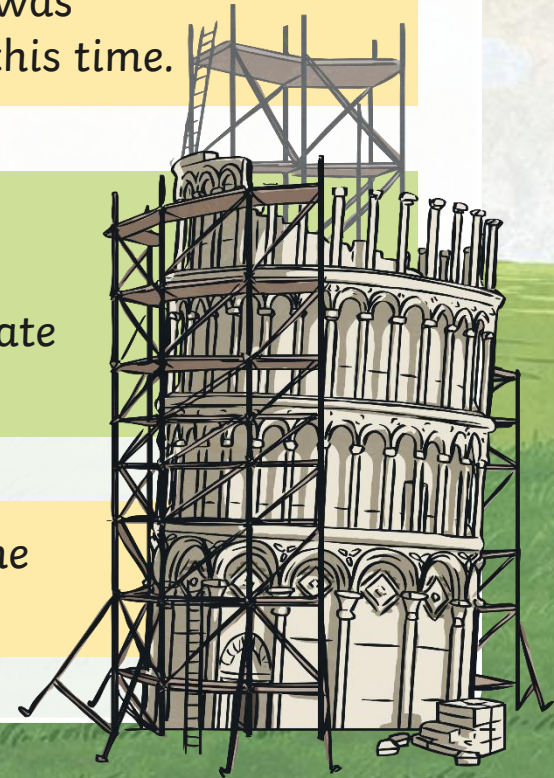
When Was the Leaning Tower of Pisa Built?

Building of the Leaning Tower of Pisa first began in 1173.

Work stopped in 1178 when it was noticed that the tower was starting to sink. Only three floors had been completed at this time.

Building resumed in 1272 after Pisa's wars with the neighbouring city of Florence. The fourth to seventh floors were built with one side taller than the other, to compensate for the tilt.

In 1278, work ceased again as the tower was leaning to the south. The tower was not completed until 1372.



Why Does the Leaning Tower of Pisa Lean?

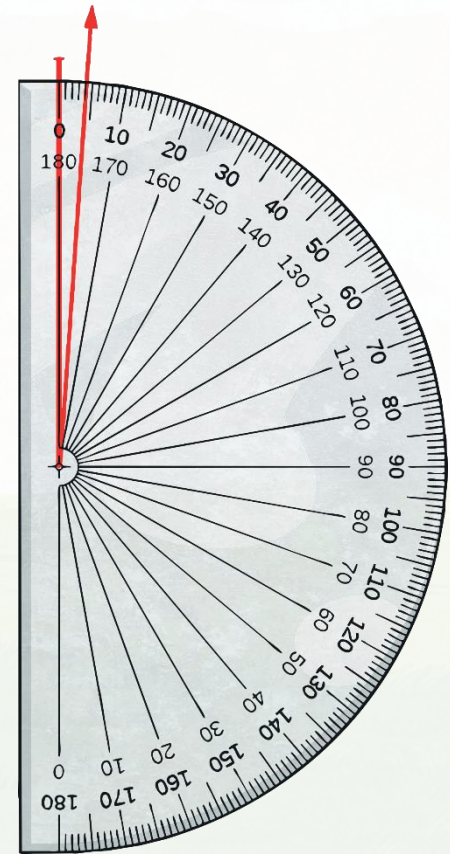
The tower is built on soft ground and its foundations started to become less stable and sink into it.

It was noticed that the tower was leaning by 1178.

Over its lifetime, the tower has been falling at a rate of 2mm each year.

The Leaning Tower of Pisa leans at around four degrees.

It is thought that if the building work had not been stopped several times, the tower would have toppled over.



Is the Leaning Tower of Pisa Popular With Tourists?

Millions of people, from all over the world, visit the Leaning Tower of Pisa.

The tower was closed for eleven years, between 1990 and 2001, for restoration work. It is thought that the tower could stand for another 200 years.

Many visitors take photographs of themselves at the tower, using perspective to make it look as if they are holding the tower up.



Some Fascinating Facts About the Leaning Tower of Pisa

In 1934, Mussolini, the Italian dictator, claimed the tower was an embarrassment to the country and ordered it to be straightened. This was attempted by pouring tons of cement into holes that were drilled into its base. Sadly, the cement caused the foundations to sink deeper into the ground and caused the tower to lean further.

The renowned Italian physicist, Galileo, is reported to have dropped a cannonball and a musket ball from the top of the tower to prove his theory on gravity's effect on objects, regardless of their mass, in 1589.



The tower was used as a military base by the German army during the Second World War.